

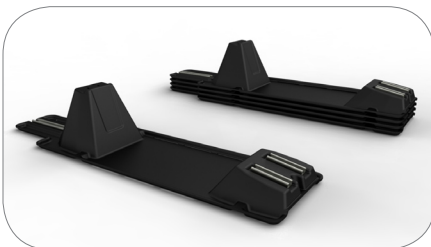
# InstaRack

Available in 10 & 15 degrees

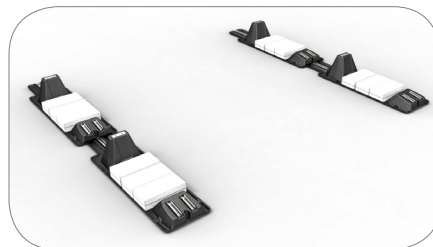
**Sollega InstaRack is the solar industry's only fully assembled, one-piece solar racking system made from recycled materials.**

- Reduces labor costs of racking installation by up to 50%
- Prepanel option further reduces worker hours on the roof
- One-piece molded unit requires only one tool
- Fully ballasted with optional mechanical roof anchors
- Decreases time and space needed to stage installation
- Universal design is compatible with most crystalline and thin film modules
- Light weight stackable design reduces shipping & storage costs
- Compatible for a variety of roofing materials
- Enhanced durability with an ultra-violet (UV) inhibitor
- Lower carbon footprint than conventional steel or aluminum alternatives
- 100% made in USA (ARRA compliant) using locally sourced recycled materials

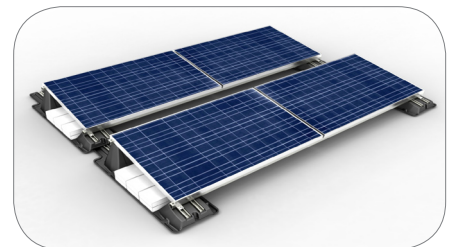
## ① Position InstaRacks

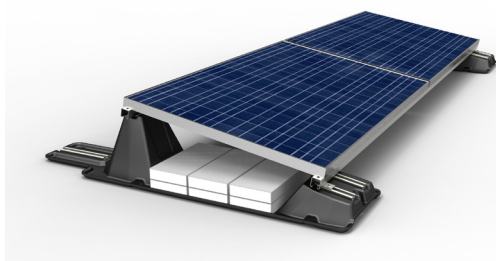
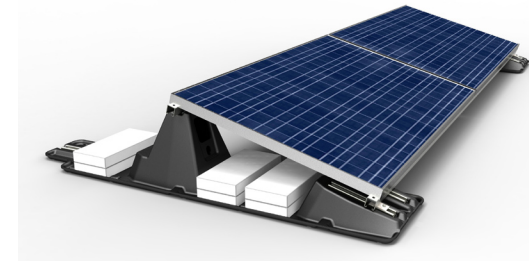
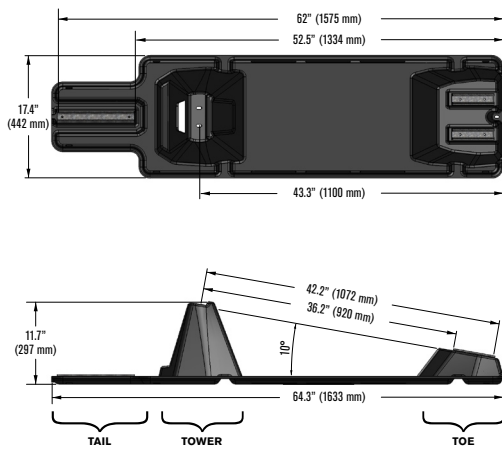
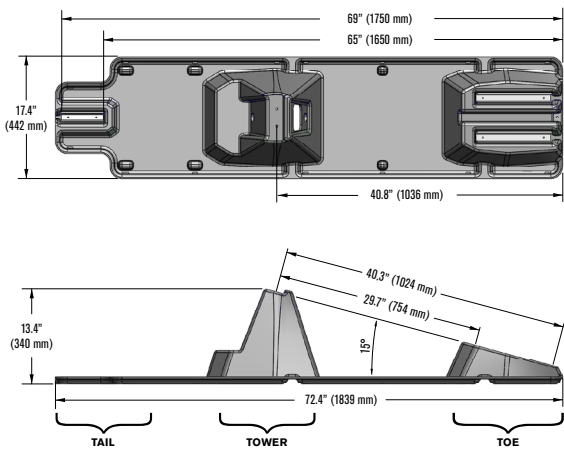


## ② Add ballast



## ③ Attach panels



Product Name	InstaRack 10™	InstaRack 15™
Product Image		
Tilt Angle	10°	15°
Compatible Modules	All framed modules 37.3" - 44" in width (948 mm and 1117 mm)	All framed modules 30" - 42" in width (762 mm and 1067 mm)
Row Spacing	Maximum: 62" (1575 mm) Minimum: 52.5" (1334 mm)	Maximum: 69" (1750 mm) Minimum: 65" (1650 mm)
Weight	12 lbs. (5.4 kg)	17 lbs. (7.7 kg)
Ballast Requirements	4" x 8" x 16" Roof Paver (31.5 lbs each) based on ASTM Designation C1491 - 01a.	
Material	High-Density Polyethylene (HDPE) Minimum 35% recycled content	
Module Orientation	Landscape	
Wind Load Criteria	Meets ASCE 7-05 up to 120 mph	
UL Material Rating	UL 94-HB	
Warranty	25 years	
Dimensions	(LxWxH) 64.3" x 17.4" x 11.7" 1633 mm x 442 mm x 297 mm	(LxWxH) 72.4" x 17.4" x 13.4" 1839 mm x 442 mm x 340 mm
	 <p>Top view dimensions: 62" (1575 mm), 52.5" (1334 mm), 17.4" (442 mm), 43.3" (1100 mm)</p> <p>Side view dimensions: 42.2" (1072 mm), 36.2" (920 mm), 11.7" (297 mm), 64.3" (1633 mm)</p> <p>Labels: TAIL, TOWER, TOE</p>	 <p>Top view dimensions: 69" (1750 mm), 65" (1650 mm), 17.4" (442 mm), 40.8" (1036 mm)</p> <p>Side view dimensions: 40.3" (1024 mm), 29.7" (754 mm), 13.4" (340 mm), 72.4" (1839 mm)</p> <p>Labels: TAIL, TOWER, TOE</p>