

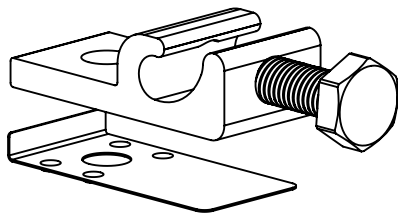


## Washer, Electrical Equipment Bond

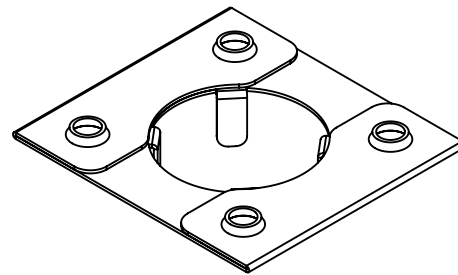
# WEEB

Patent Pending

## INSTALLATION INSTRUCTIONS *For Sollega InstaRack System Only*



**WEEBL-6.7**



**WEEB-11.5**

Products are tested to UL 467  
UL standard for safety grounding and bonding equipment

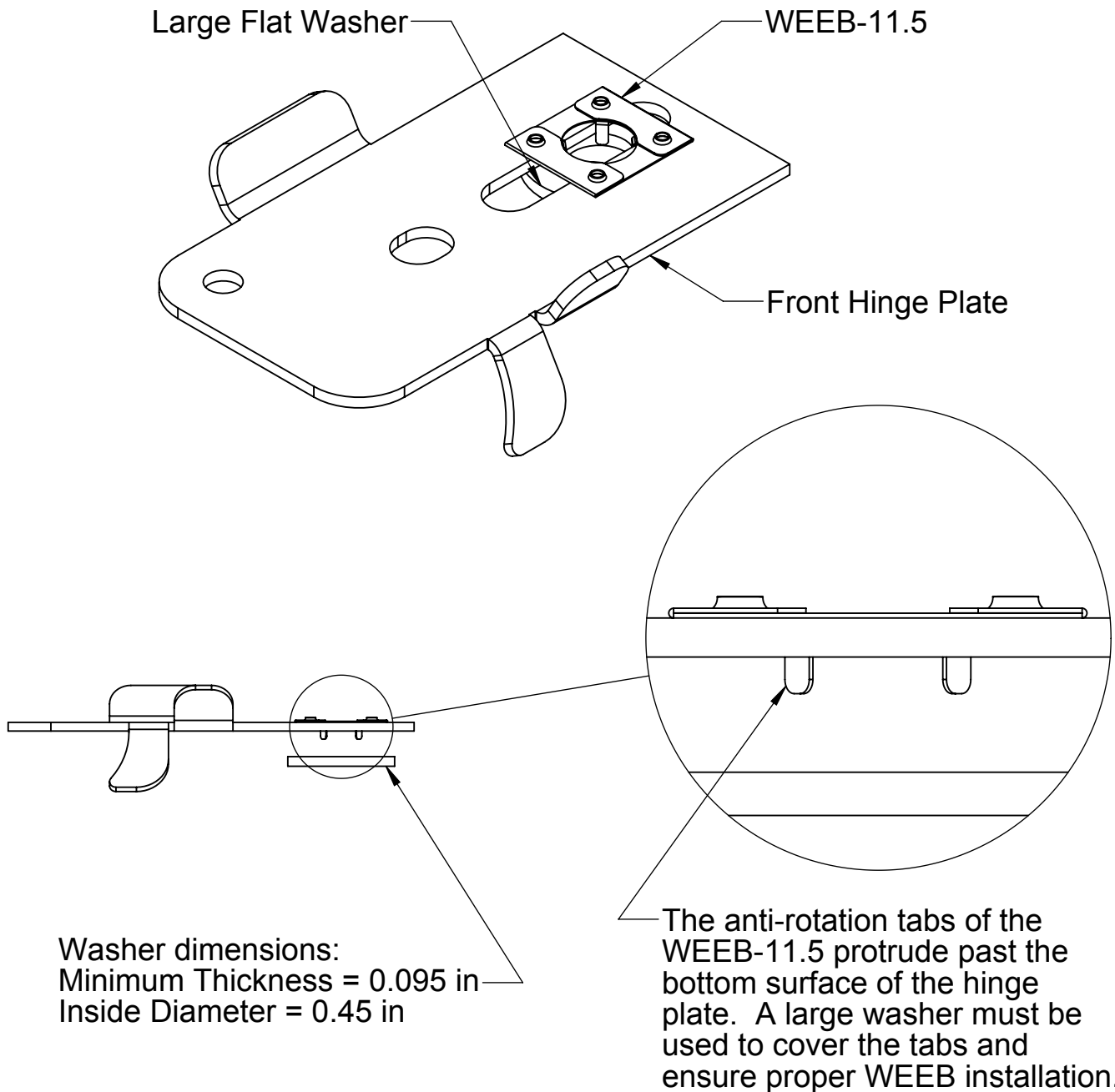
Document Number 104-0404-000055-002

Wiley Electronics LLC. 2006-2011© – All Rights Reserved



# WEEB COMPATIBILITY

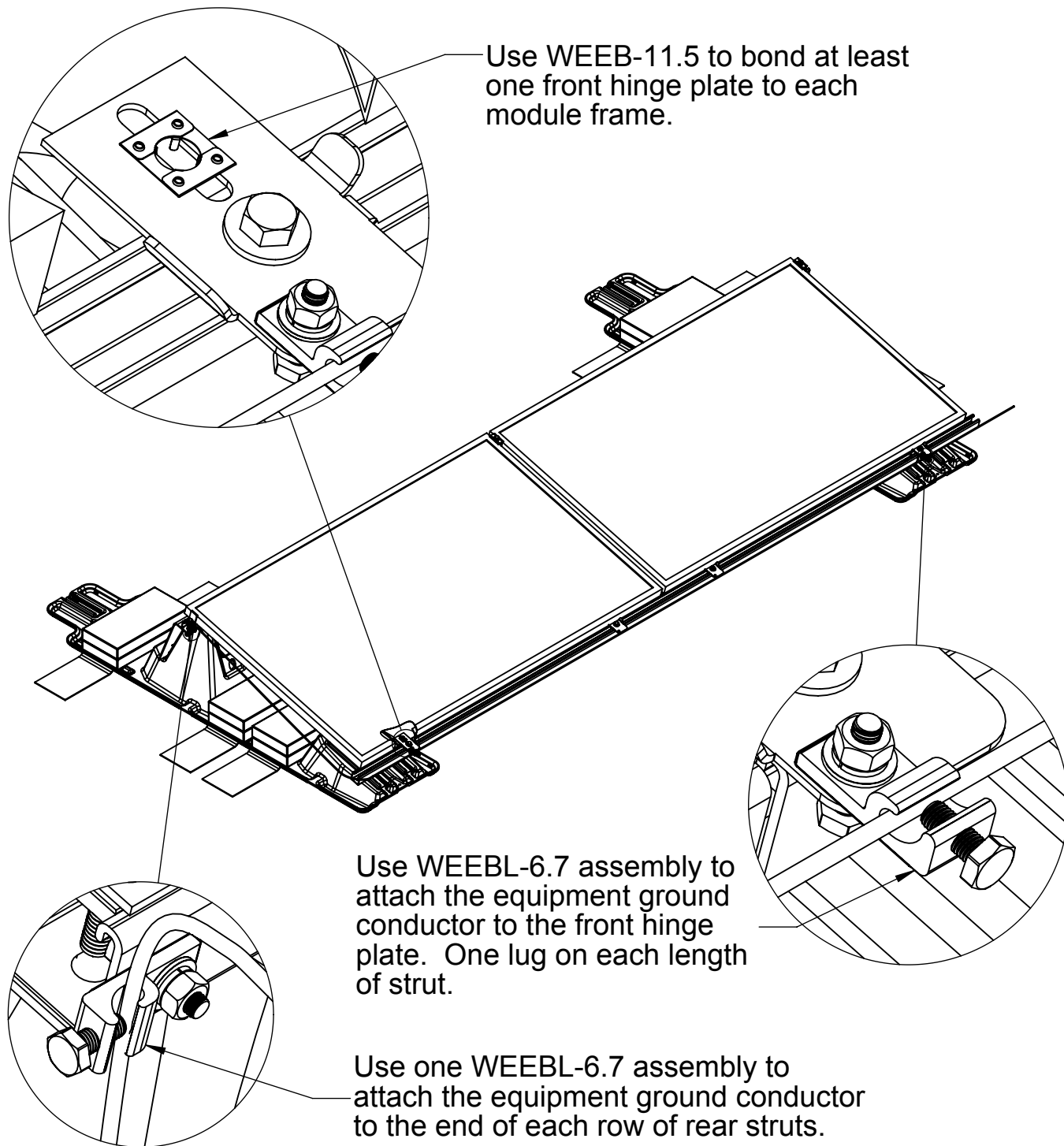
The WEEB family of products can be used to bond anodized aluminum, galvanized steel, steel and other electrically conductive metal structures.



## Important Note:

**Inspect each module frame used with a WEEB to ensure that the bottom mounting face of the frame is flat, and that there are no hinderances to embedding WEEB teeth. Do not use a module with a frame that prevents the WEEB teeth from embedding fully.**

# SYSTEM OVERVIEW



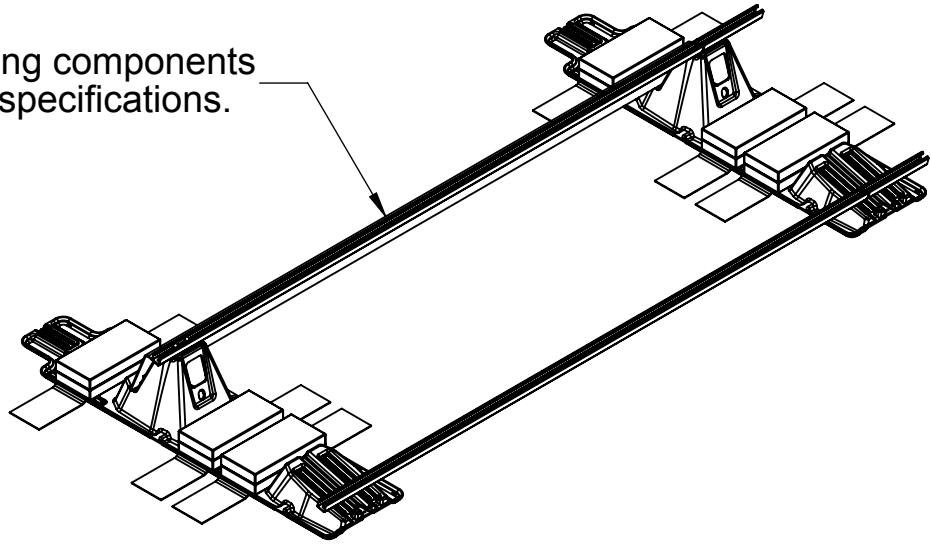
## Important Notes:

1. Use general purpose anti-seize compound on fastener threads when installing WEEBs.
2. WEEBs are intended for **SINGLE USE ONLY**. Functionality will not be guaranteed if reused.

# SYSTEM ASSEMBLY

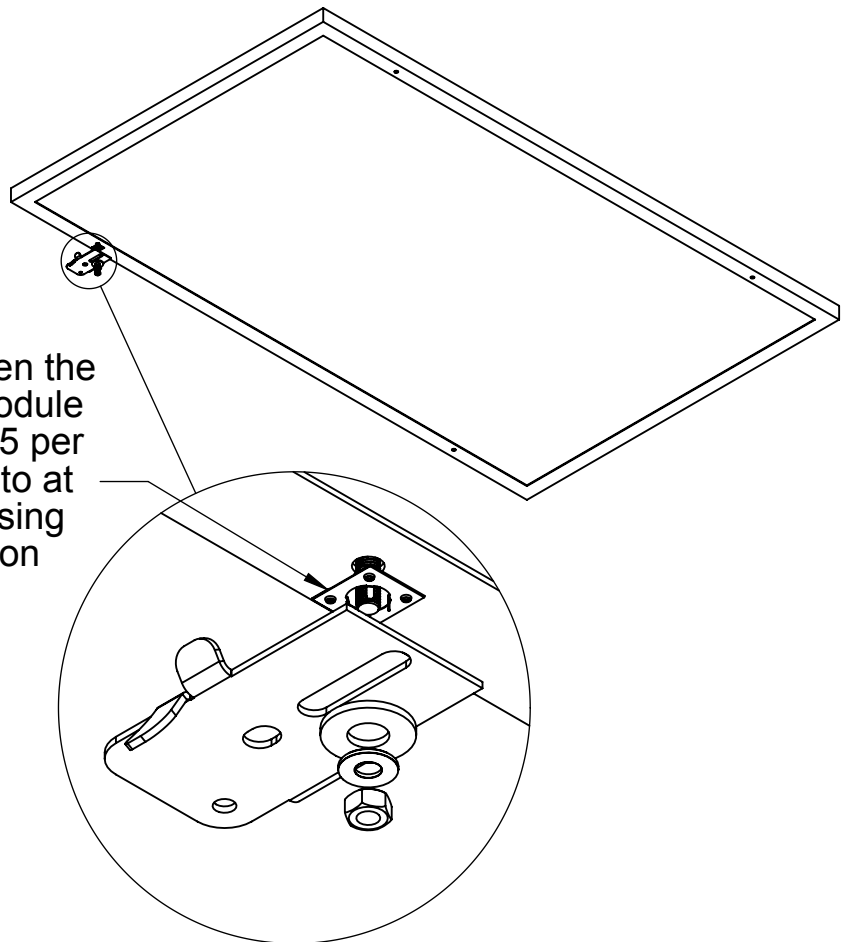
①

Assemble all racking components to manufacturer's specifications.



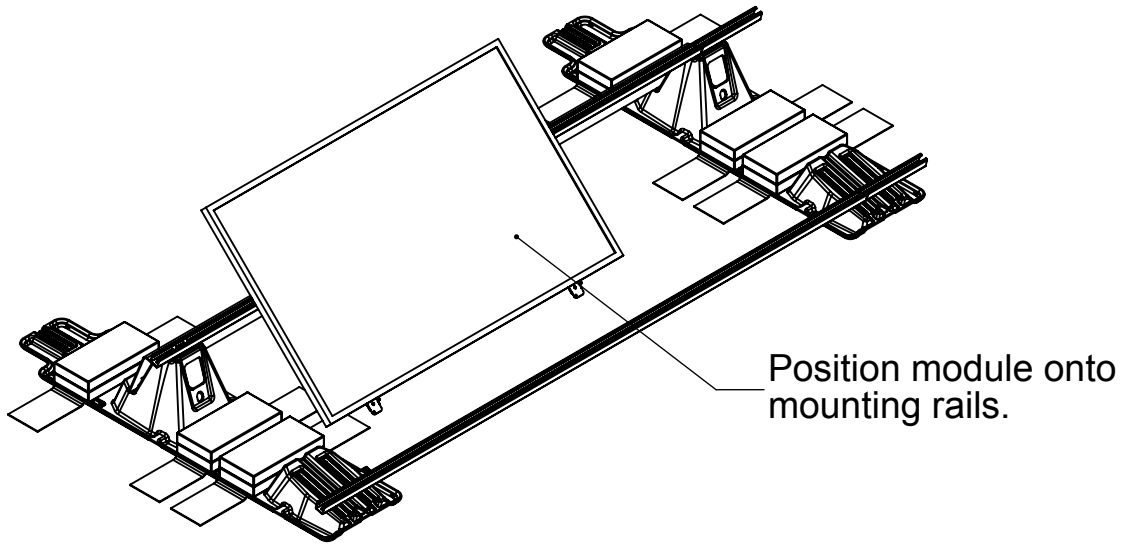
②

Install a WEEB-11.5 between the front hinge plate and the module frame. Use one WEEB-11.5 per module. Tighten fasteners to at least 10 ft-lbs / 13.5 N-m, using general purpose anti-seize on threads.

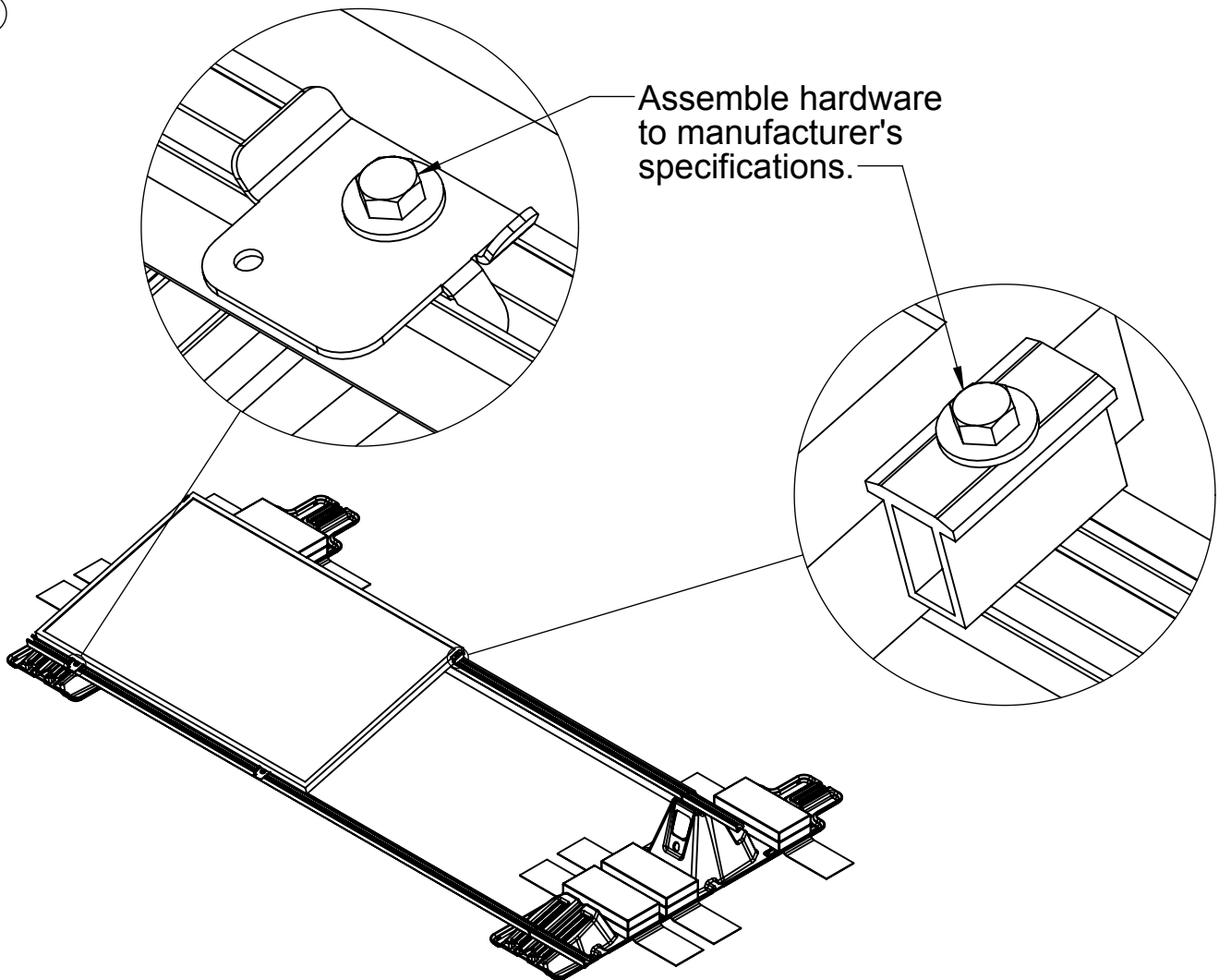


# MODULE INSTALLATION

3

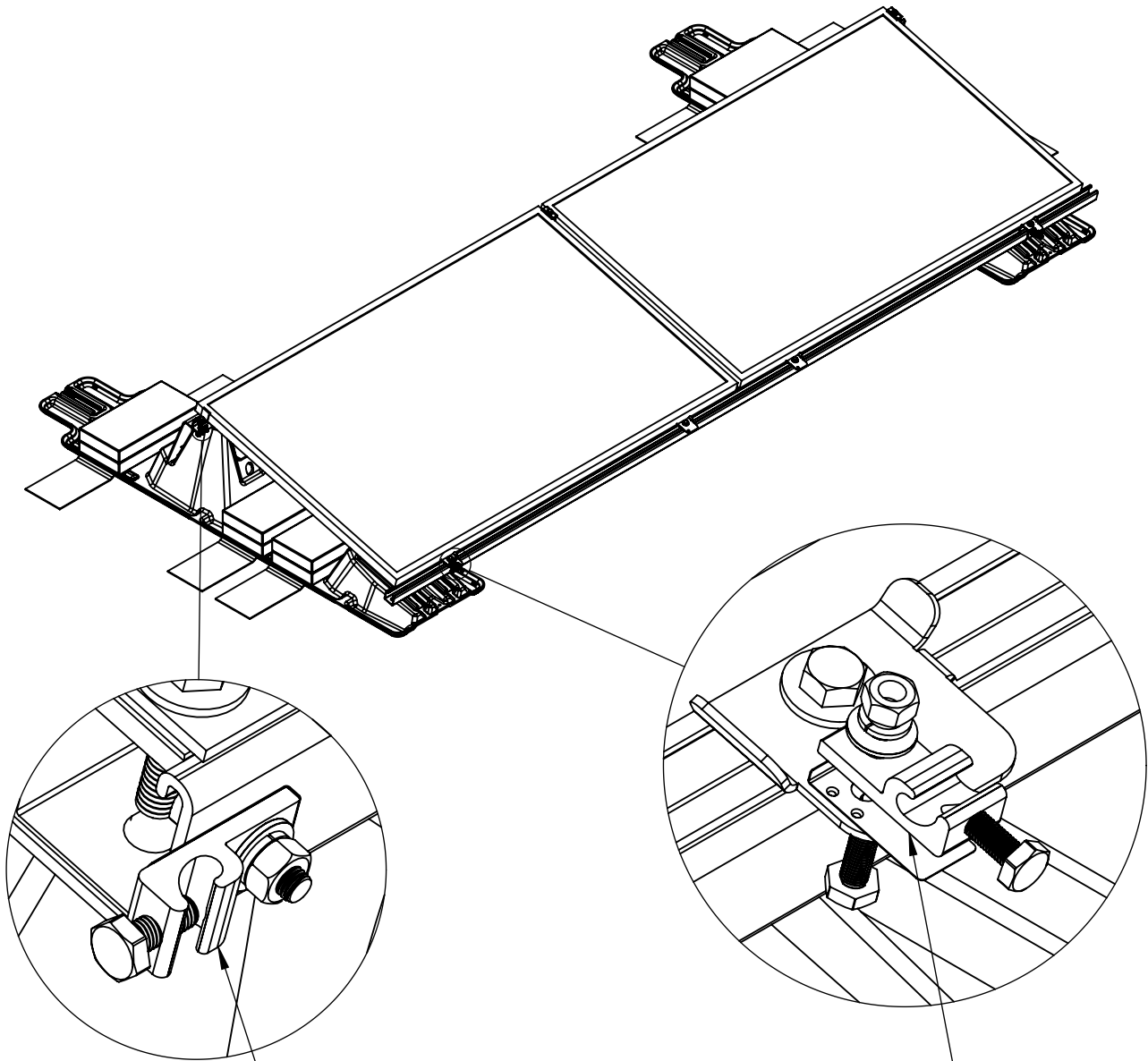


4



# WEEBLUG ASSEMBLY

7



Assemble WEEBL-6.7 assembly with the WEEB teeth pointing toward the rail. Tighten fasteners to 10 ft-lb / 13.5 N-m using general purpose anti-seize on threads.

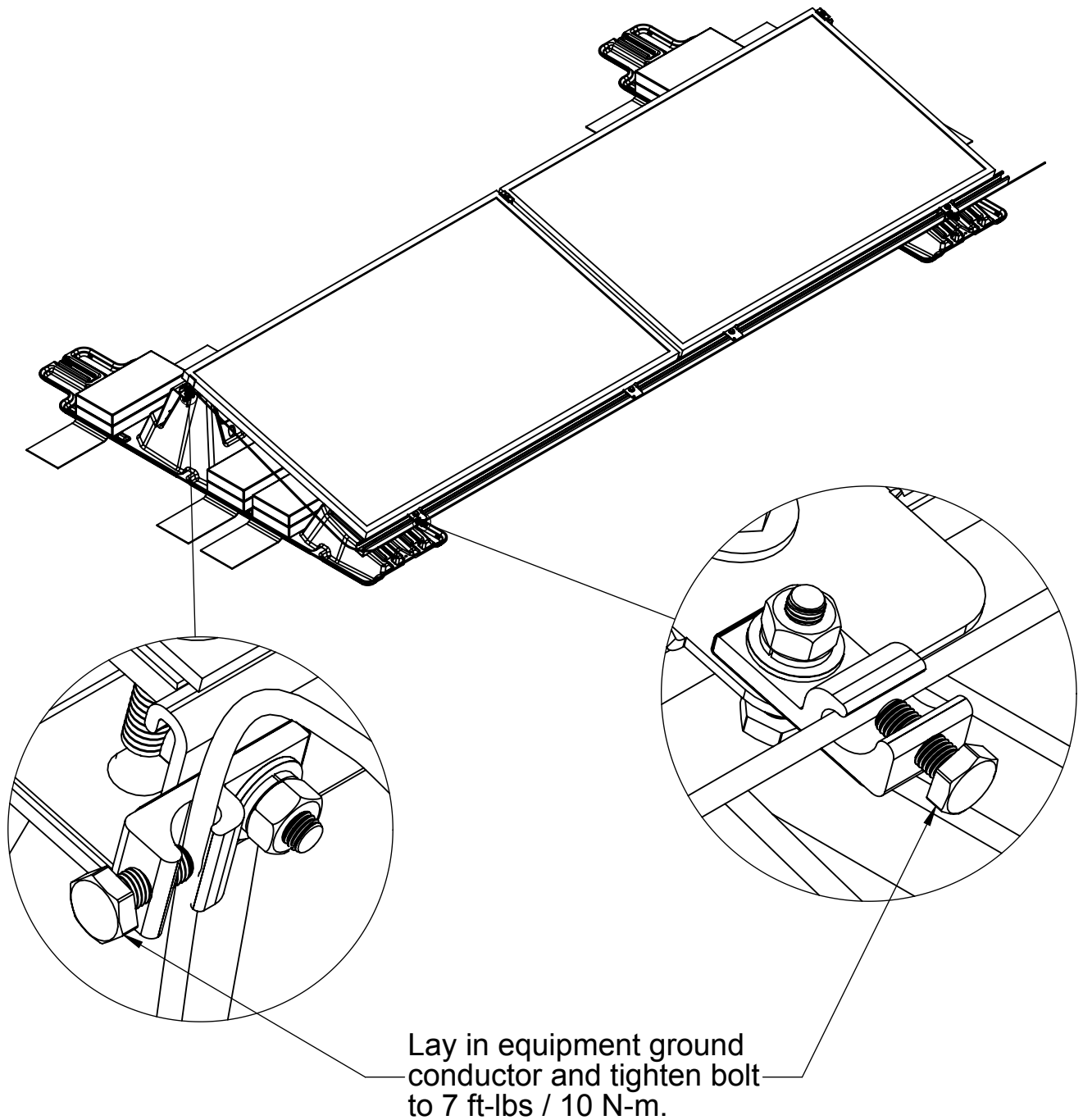
## Important Notes:

The WEEB-6.7 that sits under the lug is for **SINGLE USE ONLY!** Ensure position is correct before tightening.

WEEBL-6.7 may be used with a maximum equipment ground wire of 6 AWG.

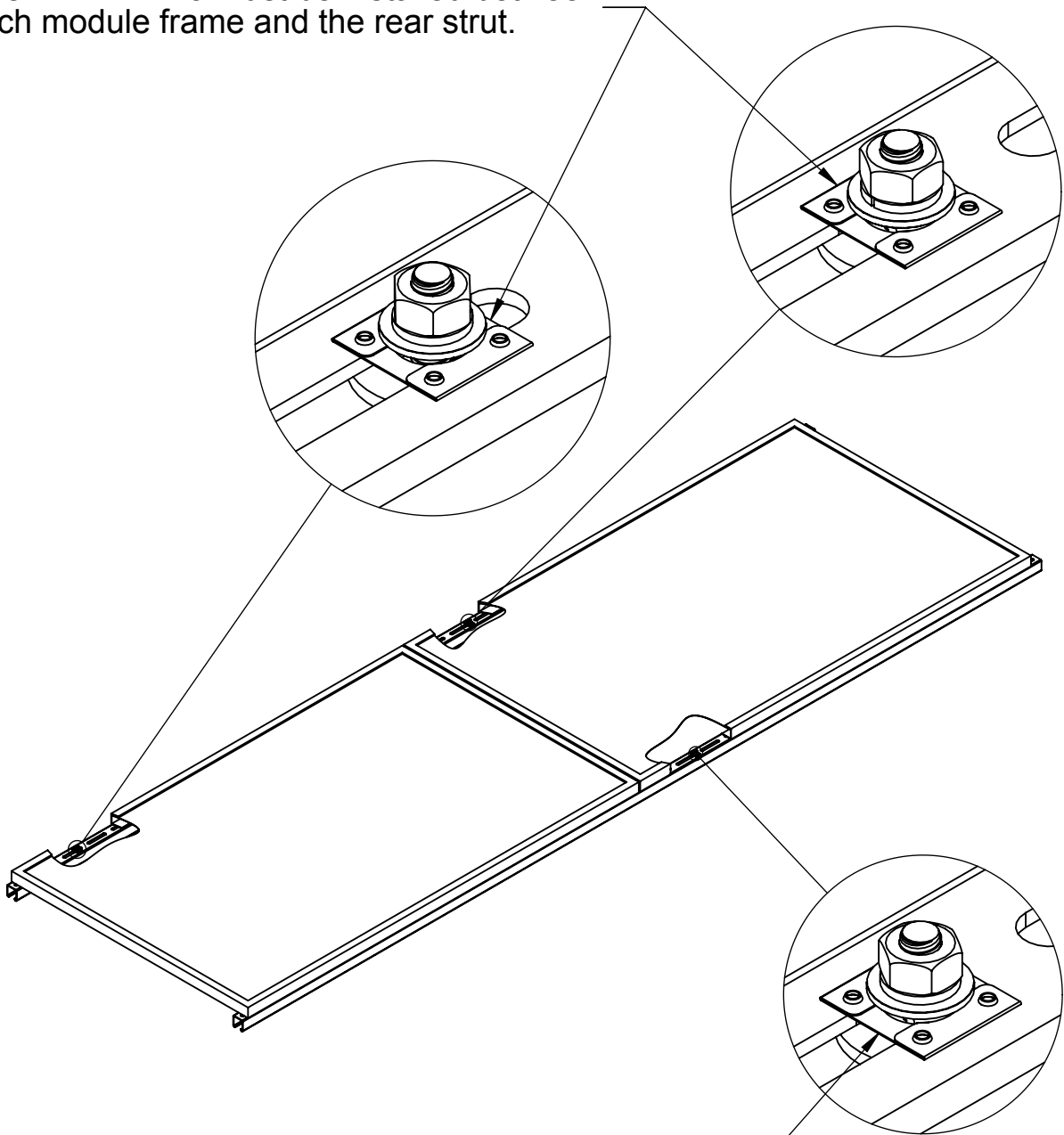
# EQUIPMENT GROUND CONNECTION

8



# PREPANELIZATION BONDING

One WEEB-11.5 must be installed between each module frame and the rear strut.



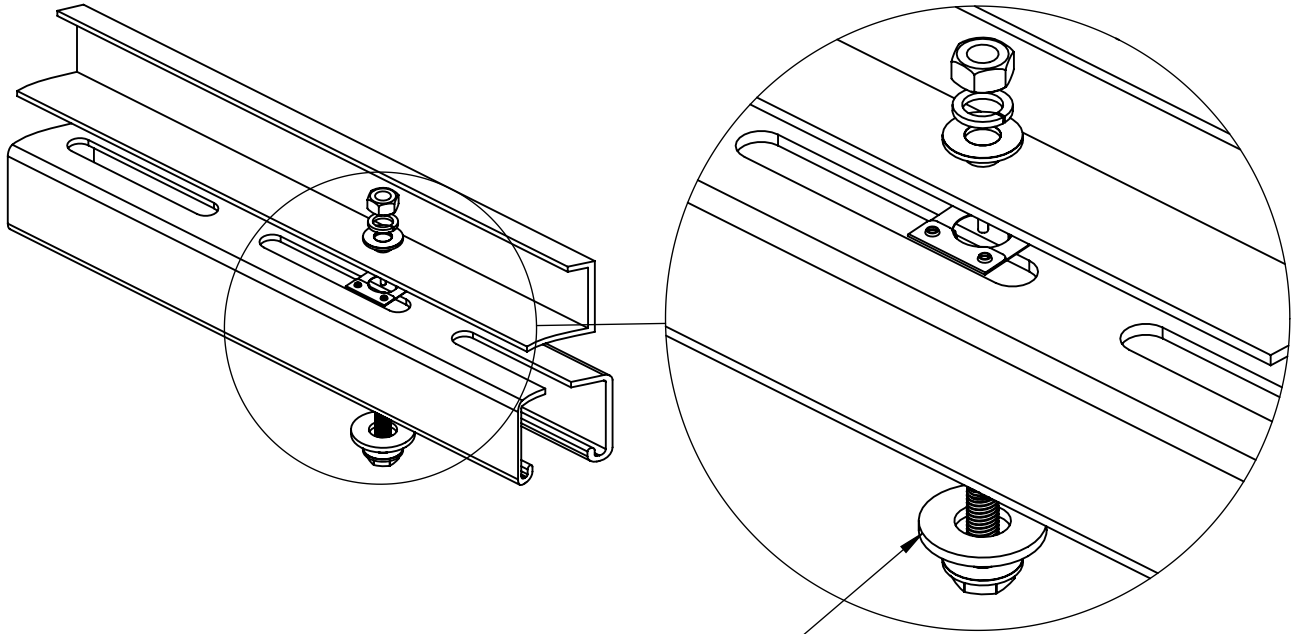
One additional WEEB-11.5 must be installed between each front strut and a single module frame.

## Important Note:

Inspect each module frame used with a WEEB to ensure that the bottom mounting face of the frame is flat, and that there are no hinderances to embedding WEEB teeth. Do not use a module with a frame that prevents the WEEB teeth from embedding fully.

# WEEB ASSEMBLY

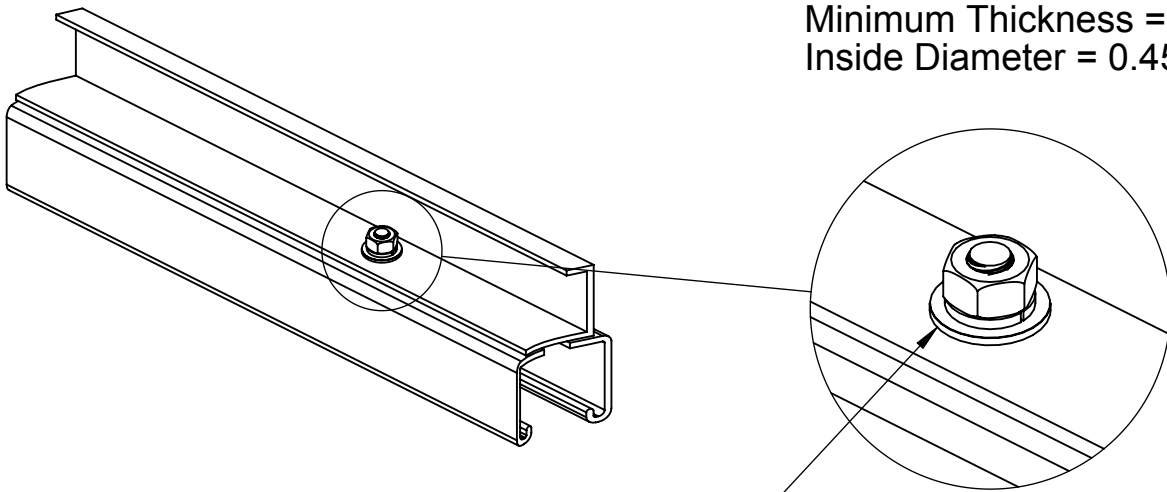
1



An additional washer must be installed where the WEEB-11.5 is used.

Washer dimensions:  
Minimum Thickness = 0.095 in  
Inside Diameter = 0.45 in

2



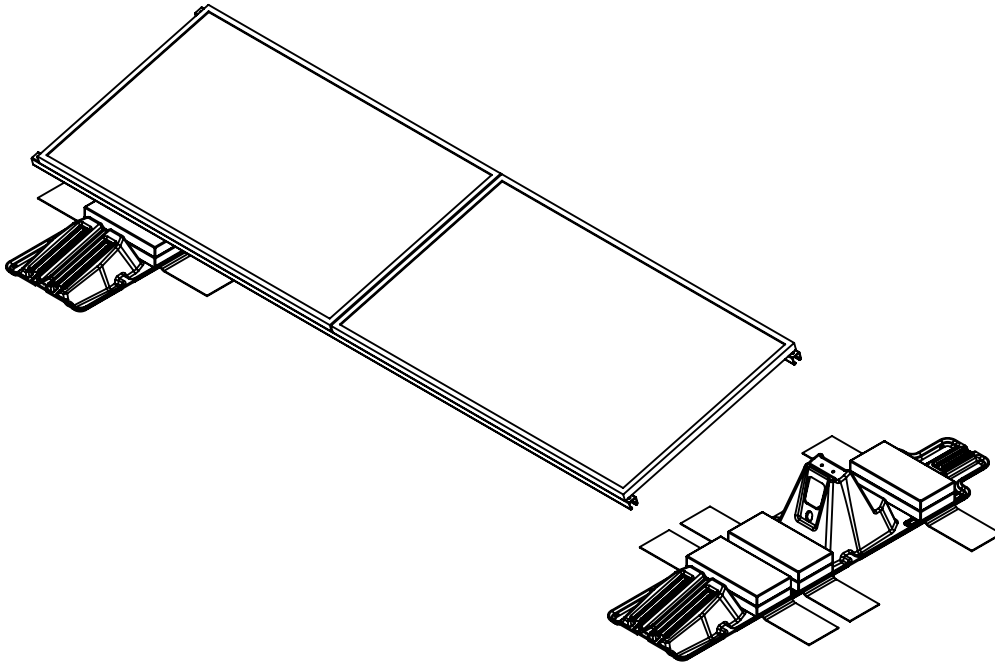
Tighten fasteners to at least 10 ft-lbs / 13.5 N-m, using general purpose anti-seize on threads.

## Important Notes:

1. Use general purpose anti-seize compound on fastener threads when installing WEEBs.
2. WEEBs are intended for **SINGLE USE ONLY**. Functionality will not be guaranteed if reused.

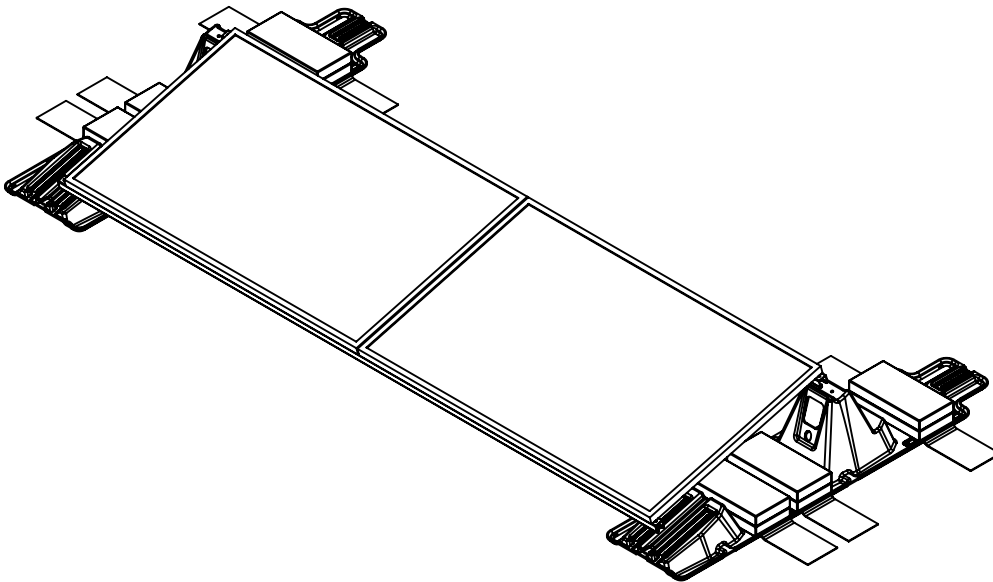
# SYSTEM ASSEMBLY

3



Place bonded prepanelization assembly onto ballast supports.

4



Install all hardware in accordance with manufacturer's recommendations.

Install a WEEBLug-6.7 on the end of each row of rear struts. Follow WEEBLug assembly instructions and equipment ground connection instructions on previous pages.