



Washer, Electrical Equipment Bond

WEEB

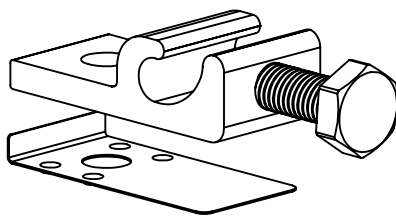
Patent Pending

INSTALLATION INSTRUCTIONS

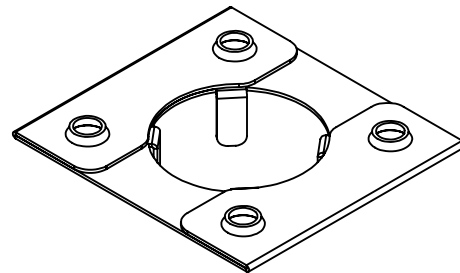
For Sollega InstaRack System Only

Please read carefully before installing.

Wiley Electronics recommends that the sufficient details of the installation be submitted to the AHJ for approval before any work is started.



WEEBLug-6.7

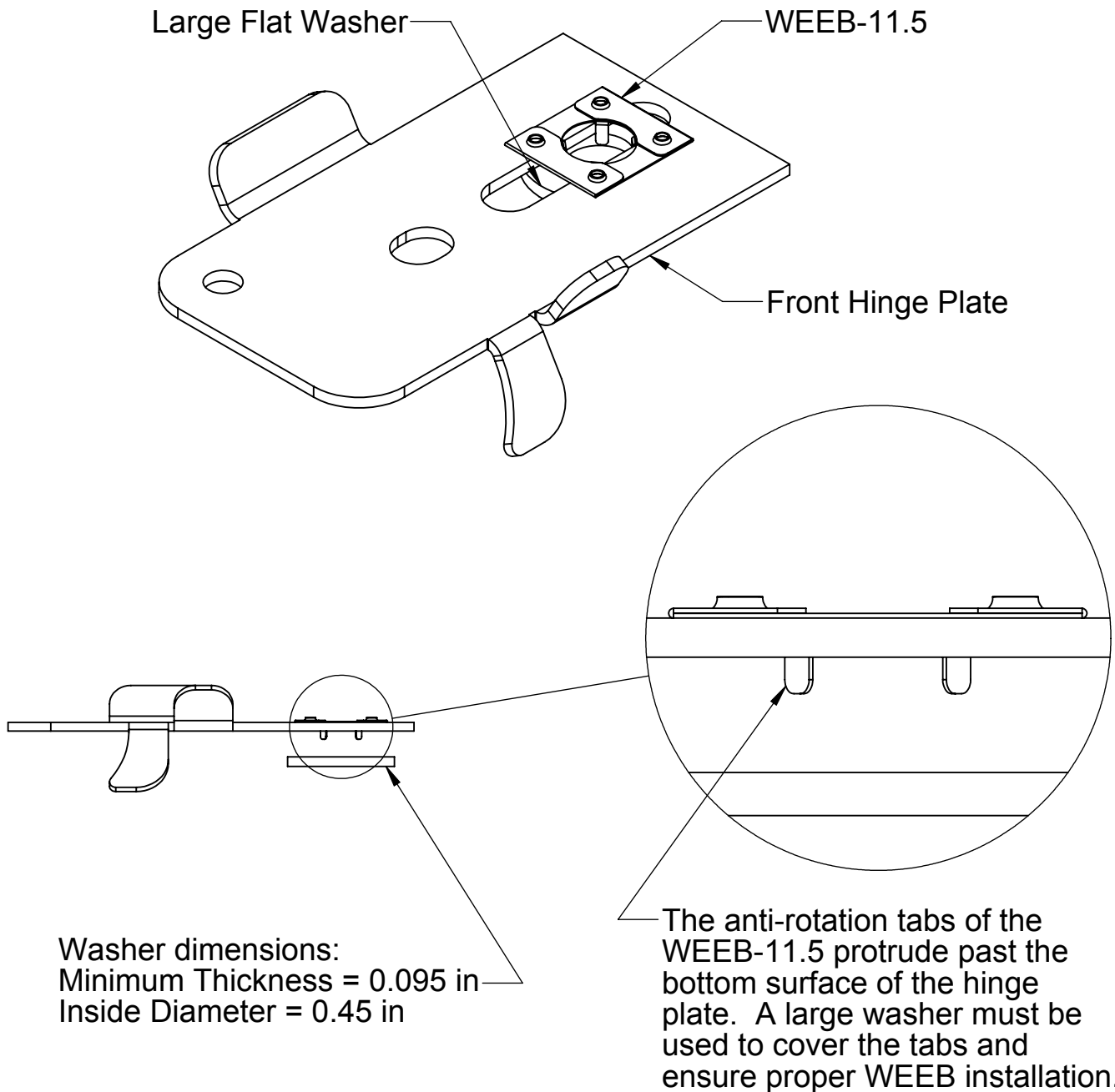


WEEB-11.5

Products are tested to UL 467, CAN/CSA-C22.2 No. 41
US/Canadian standards for safety grounding and bonding equipment

WEEB COMPATIBILITY

The WEEB family of products can be used to bond anodized aluminum, galvanized steel, steel and other electrically conductive metal structures.



Important Note:

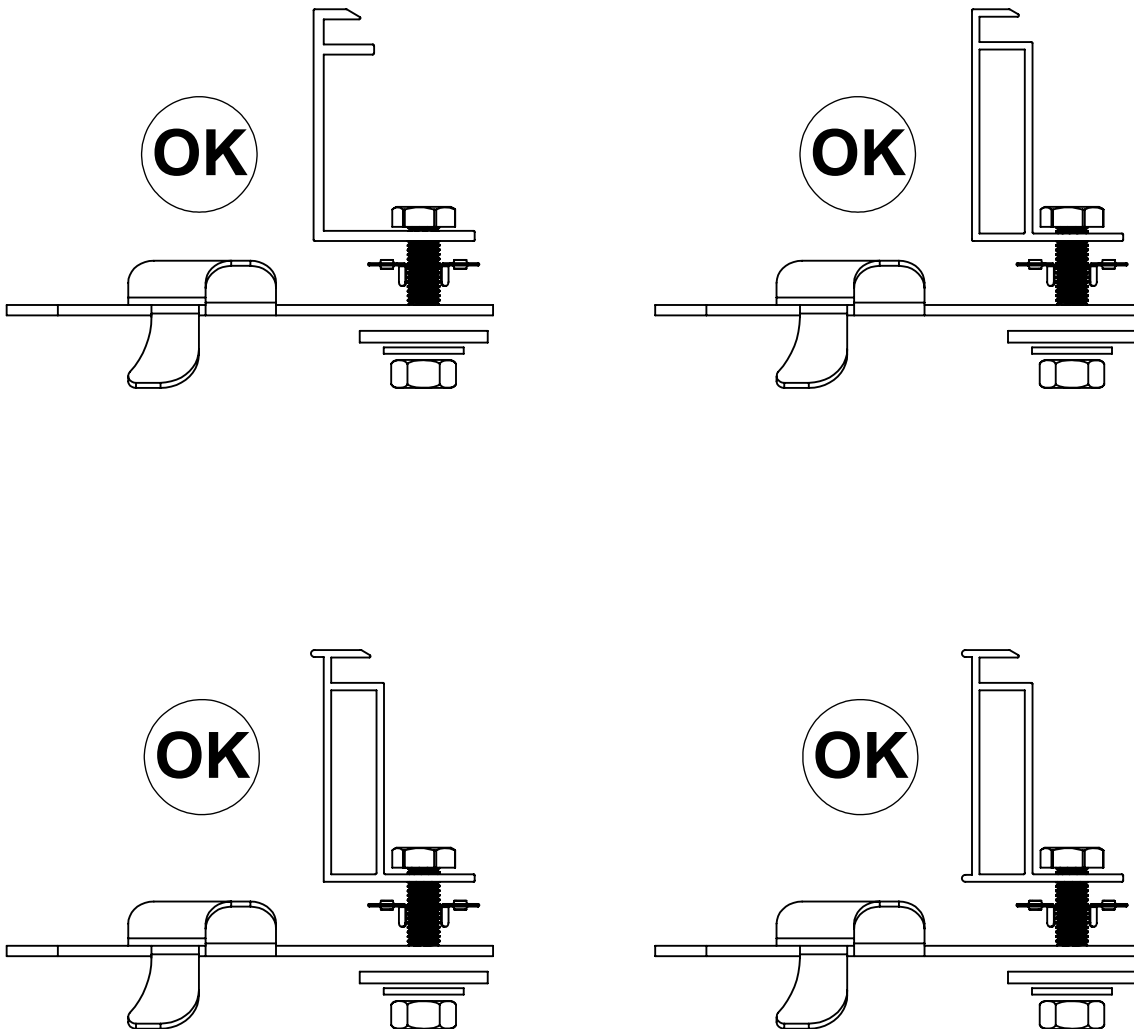
Inspect each module frame used with a WEEB to ensure that the bottom mounting face of the frame is flat, and that there are no hinderances to embedding WEEB teeth. Do not use a module with a frame that prevents the WEEB teeth from embedding fully.

WEEB COMPATIBILITY

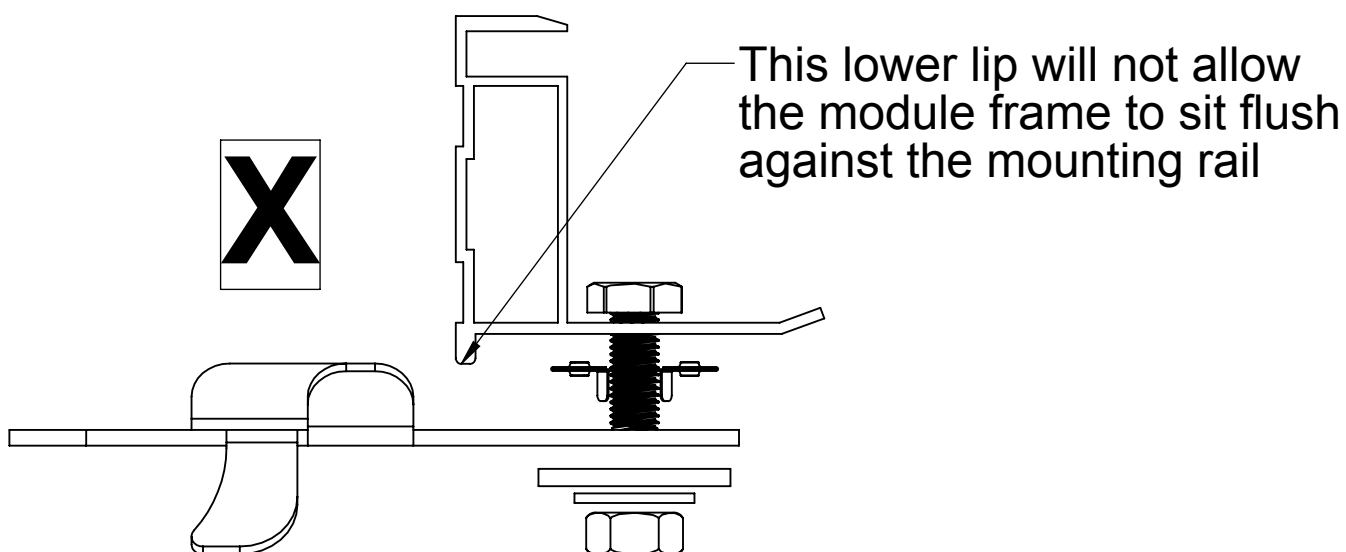
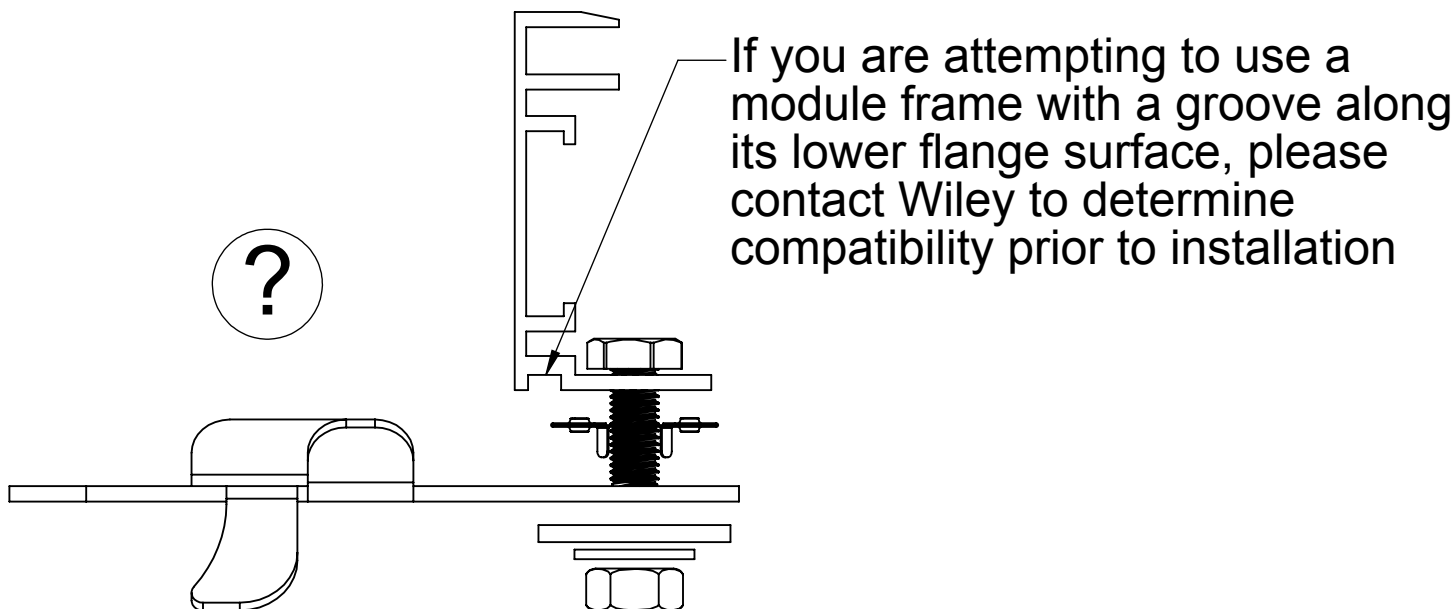
The WEEB family of products can be used to bond anodized aluminum, galvanized steel, steel and other electrically conductive metal structures. All installations shall be in accordance with NEC requirements in the USA and with CSA C22.1 in Canada. The WEEBs are for use with modules that have a maximum series fuse rating of less than 25A.

Bottom Mounting

The WEEBs used for bonding the PV modules to the mounting rails are compatible with various cross-sections of module frames. The following are examples of module frames that are compatible.



WEEB COMPATIBILITY



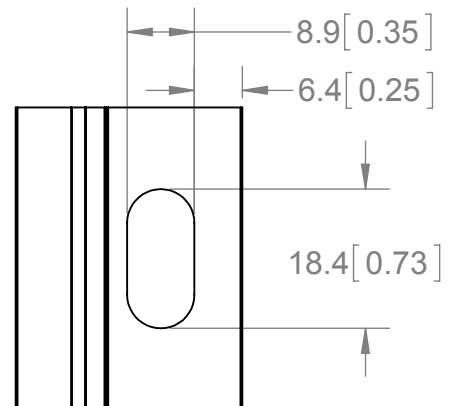
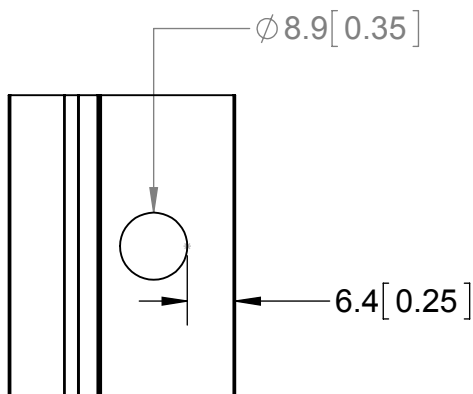
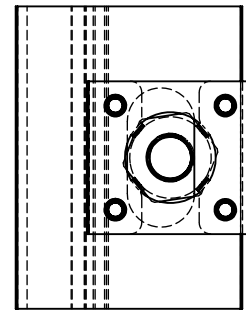
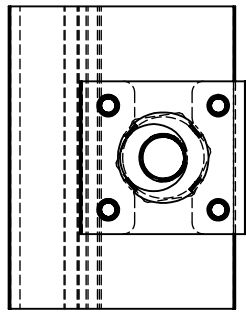
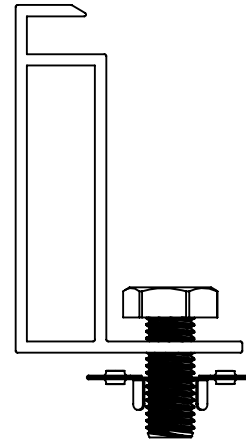
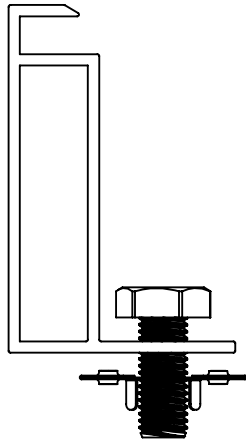
Important Note:

Inspect each module frame used with a WEEB to ensure that the bottom mounting face of the frame is flat, and that there are no hinderances to embedding WEEB teeth. Do not use a module with a frame that prevents the WEEB teeth from embedding fully.

WEEB COMPATIBILITY

WEEB-11.5 BOTTOM MOUNT SCENARIOS

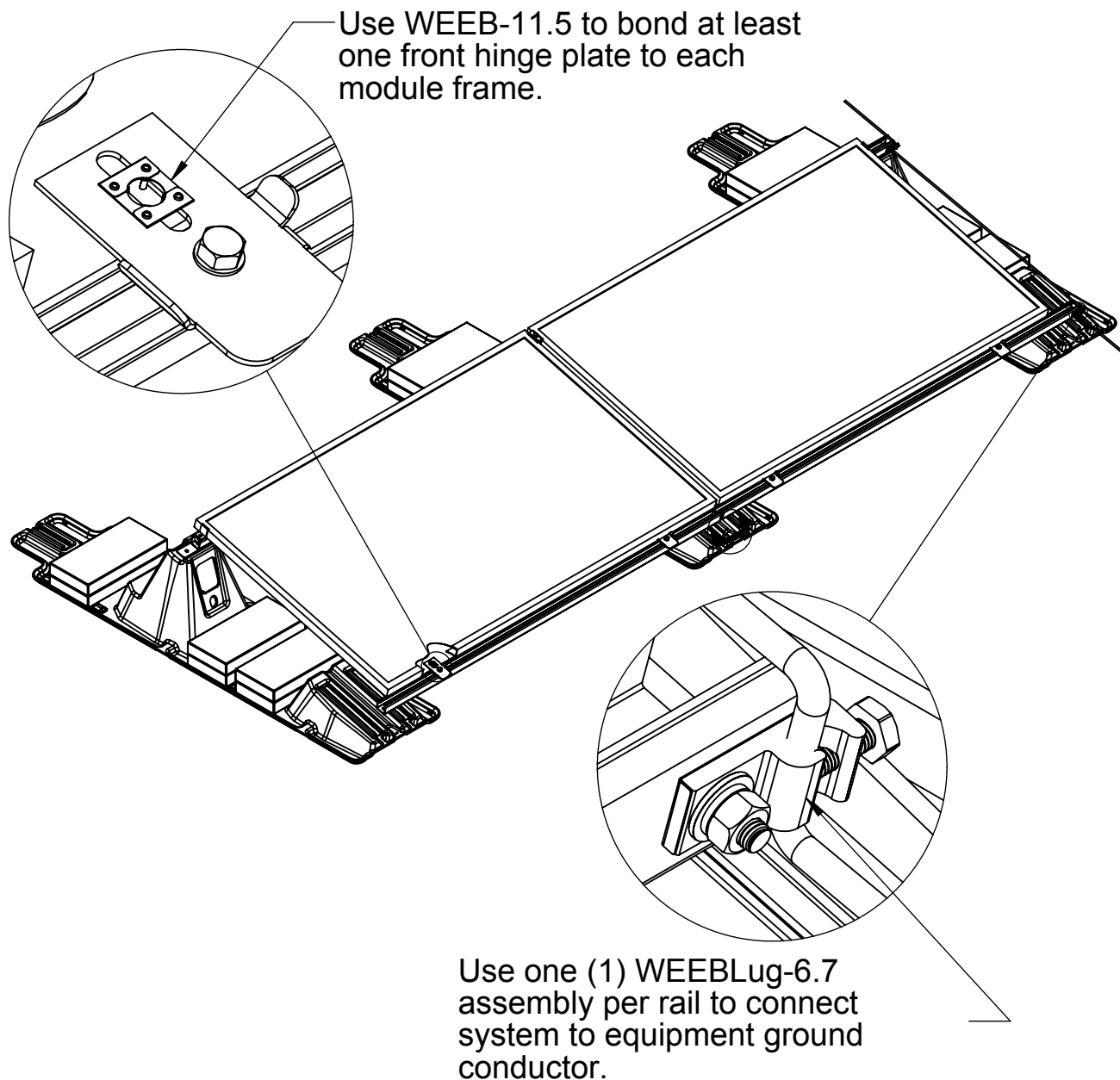
BOTTOM MOUNTING THE WEEB-11.5 REQUIRES CERTAIN MODULE FRAME SPECIFICATIONS
PLEASE REVIEW THE SCENARIOS BELOW TO DETERMINE MODULE COMPATIBILITY



The diameter of a mounting hole must not exceed **8.9mm [0.35"]**, and there must be at least **6.35mm [0.25"]** of material between the edge of the hole and the module frame edge.

The width of a mounting slot must not exceed **8.9mm [0.35"]**, and there must be at least **6.35mm [0.25"]** of material between the edge of the slot and the module frame edge.

SYSTEM OVERVIEW



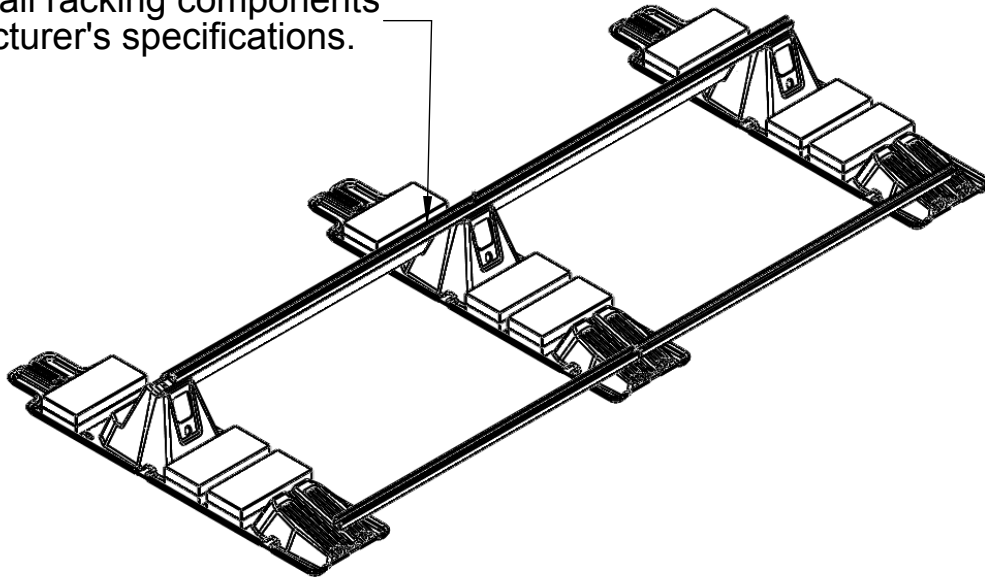
Important notes

1. Use general purpose anti-seize compound on fastener threads when installing WEEBs.
2. The NEC section 690.43 states, "Exposed non-current carrying metal parts of module frames, equipment, and conductor enclosures shall be grounded in accordance with 250.134 or 250.136(A) regardless of voltage."
3. WEEBs are intended for **SINGLE USE ONLY**. Functionality will not be guaranteed if reused.

SYSTEM ASSEMBLY

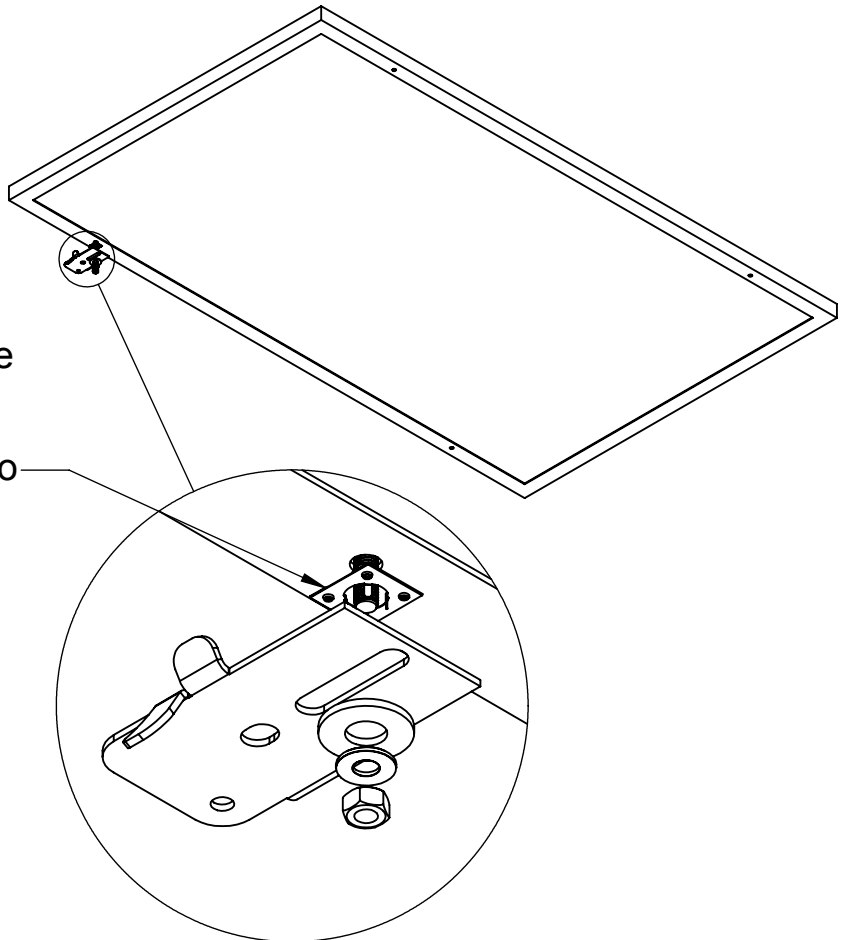
①

Assemble all racking components to manufacturer's specifications.



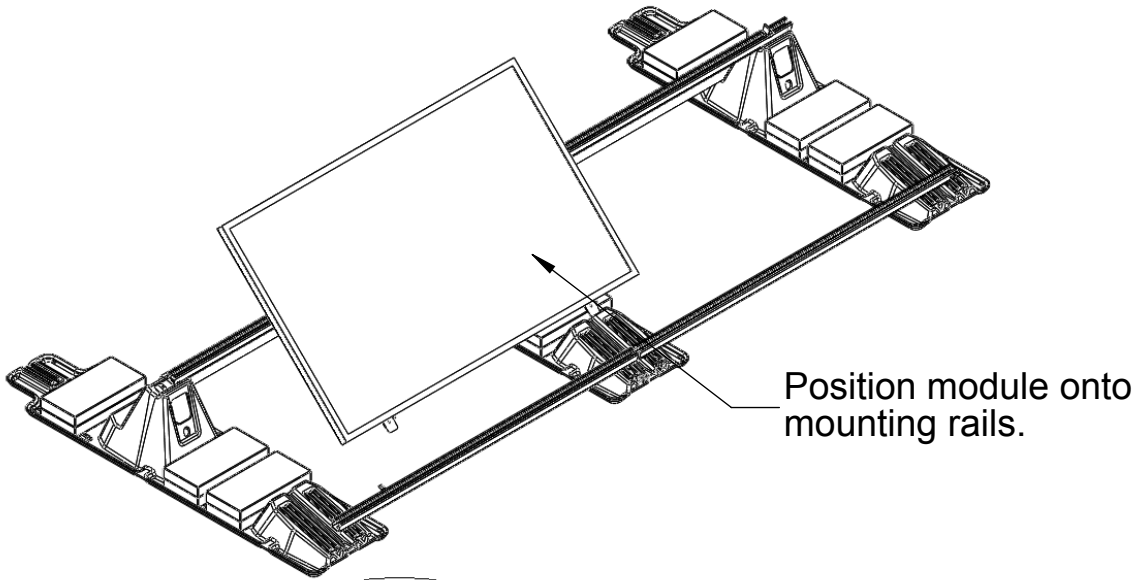
②

Install a WEEB-11.5 between the front hinge plate and the module frame. **Use one (1) WEEB-11.5 per module.** Tighten fasteners to 10 ft-lbs / 13.5 N-m, using general purpose anti-seize on threads.

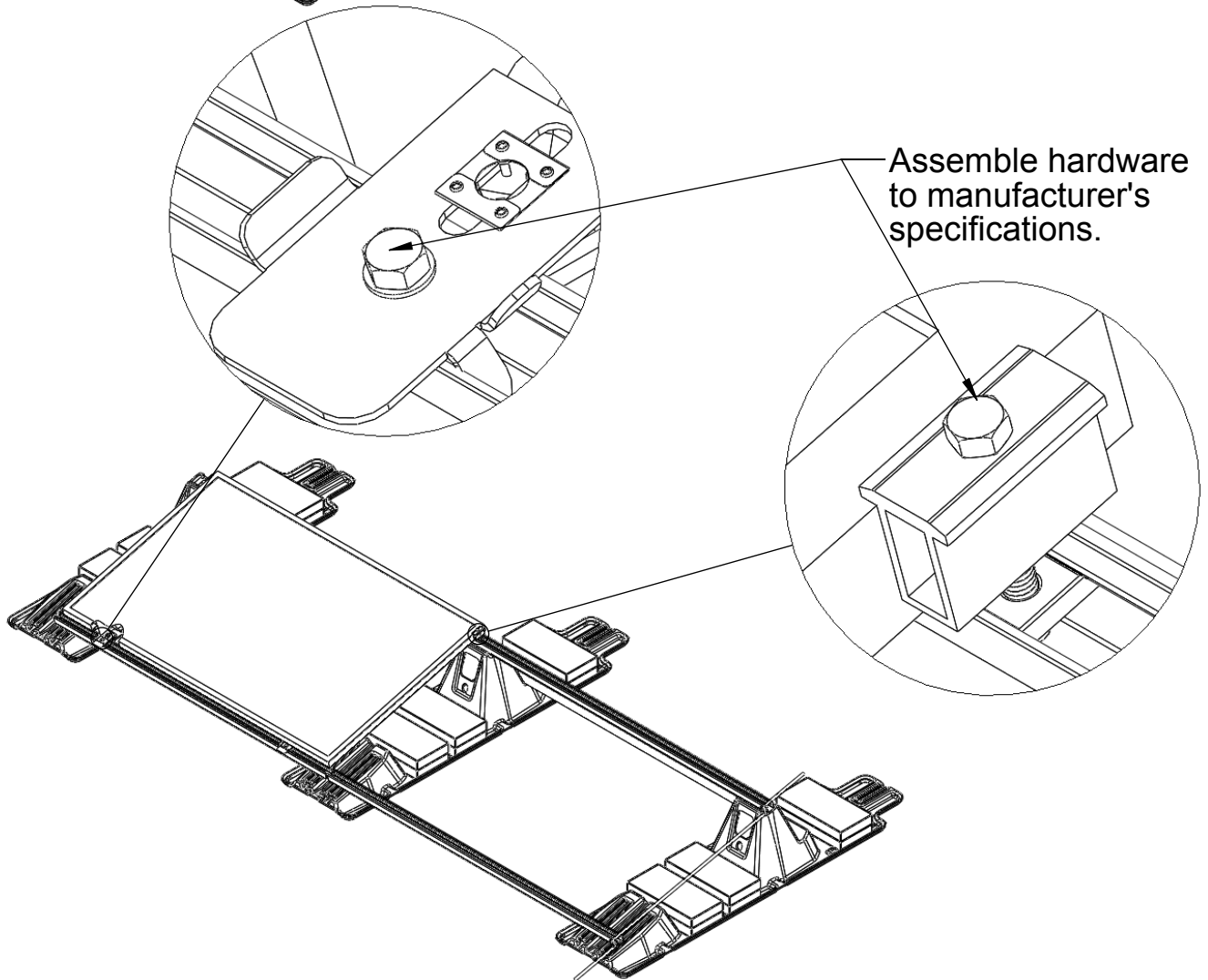


MODULE INSTALLATION

3

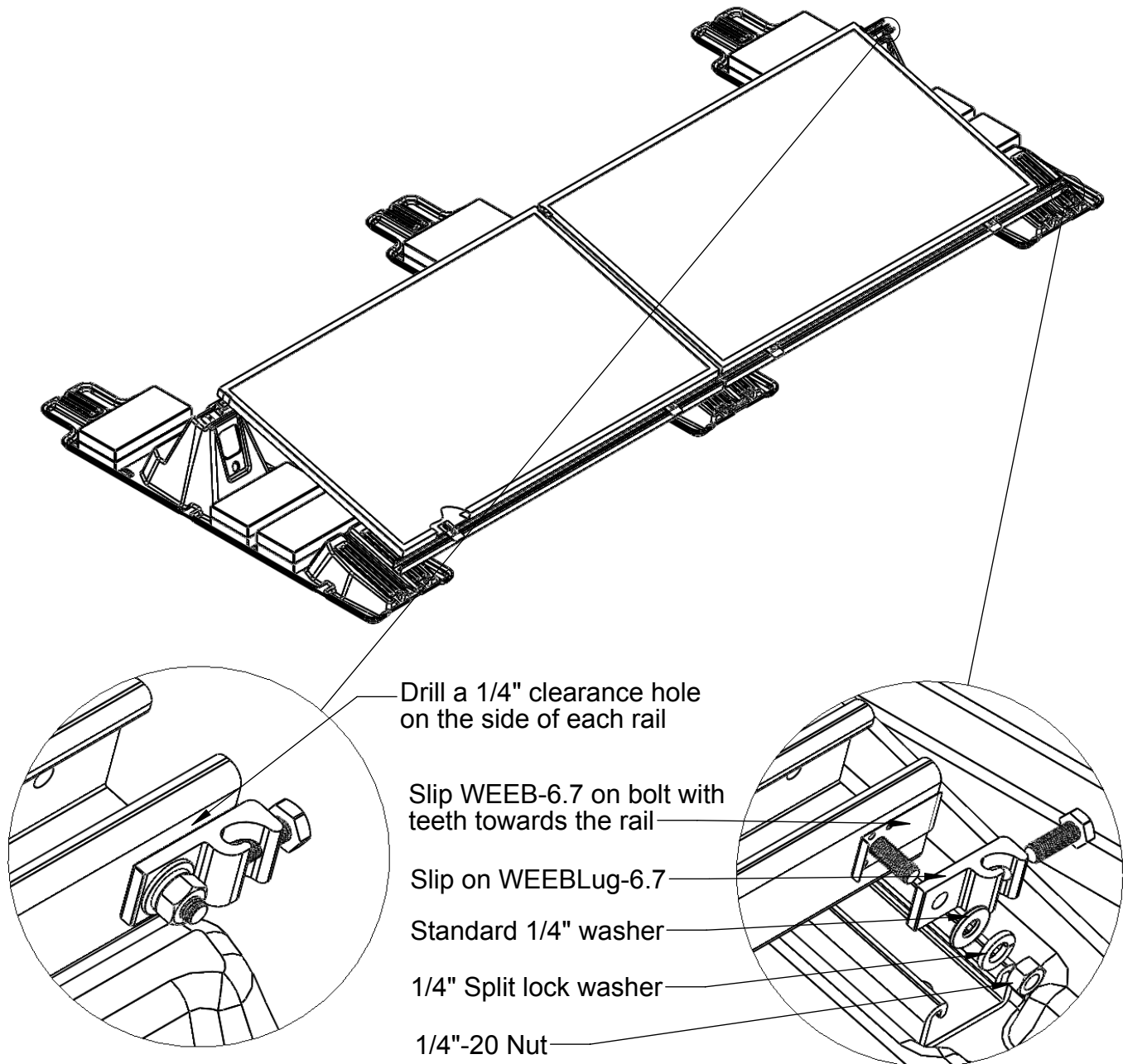


4



EQUIPMENT GROUND CONNECTION

- ⑤ Install WEEBLug-6.7 assembly on each rail and torque 1/4"-20 fasteners to 12ft-lbs / 13.5 N-m using general purpose anti-seize compound on threads.

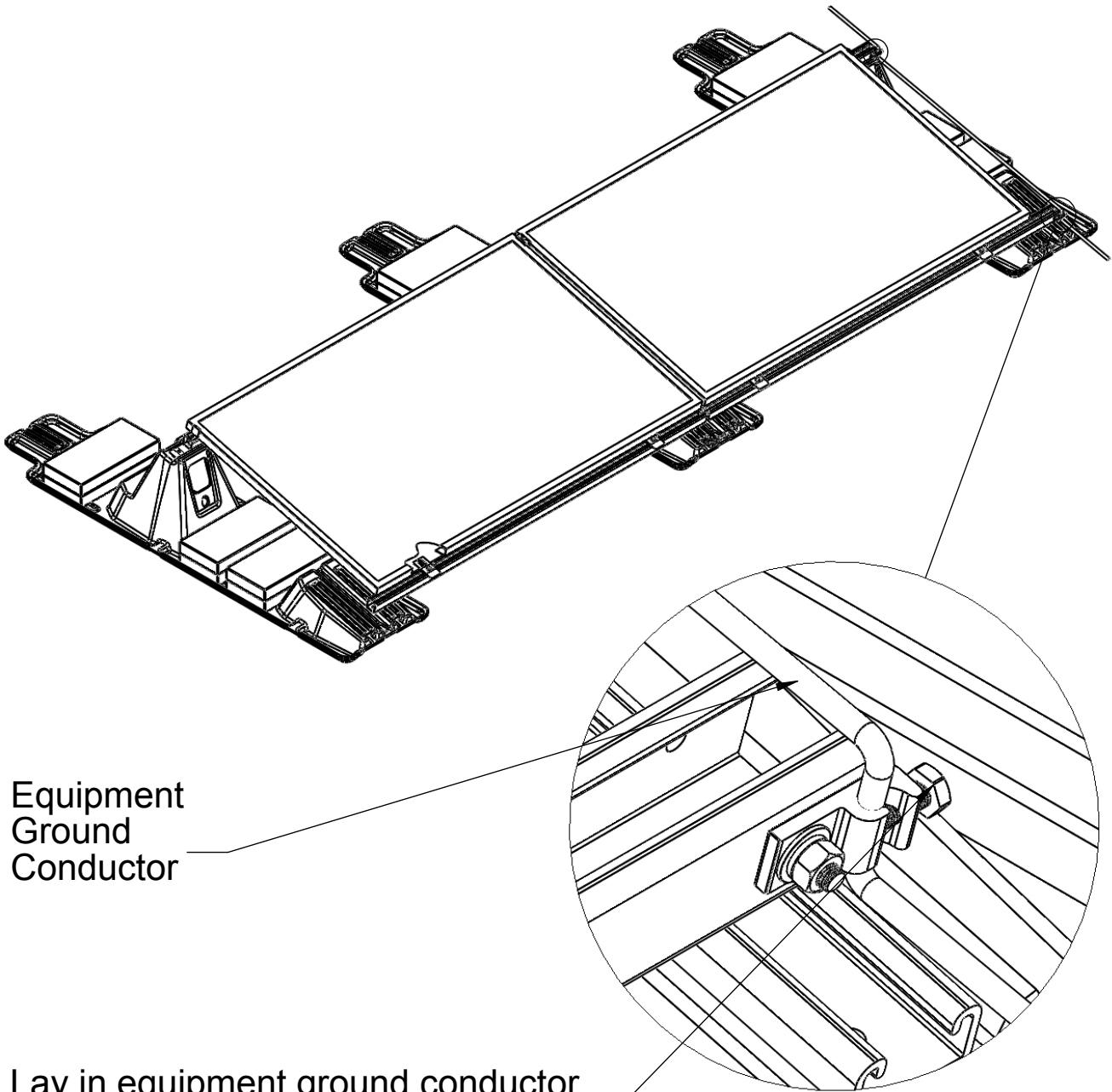


Important note:

1. The WEEB-6.7 must always be used with the lug, despite the fact that galvanized steel is a conductive material. In accordance with the lug's ETL listing, it may not be used independent of the WEEB.
2. WEEB-6.7 that sits under the WEEBLug is for **SINGLE USE ONLY**. Ensure position is correct before tightening down.
3. The may be used with a maximum equipment ground wire of 6 AWG.

EQUIPMENT GROUND CONNECTION

⑥



Equipment
Ground
Conductor

Lay in equipment ground conductor
and tighten bolt to 7 ft-lb / 10 N-m.

Important note:

1. The WEEB-6.7 must always be used with the lug, despite the fact that galvanized steel is a conductive material. In accordance with the lug's ETL listing, it may not be used independent of the WEEB.
2. WEEB-6.7 that sits under the WEEBLug is for **SINGLE USE ONLY**. Ensure position is correct before tightening down.
3. The may be used with a maximum equipment ground wire of **6 AWG**.